

CEDAR RAPIDS, IOWA



J.E. ADAMS INDUSTRIES  
OWNERS MANUAL

MODEL 9500 SERIES

- PAGE 2            PRODUCT INFORMATION
- PAGE 3            SPECIFICATIONS
- PAGE 3            IMPORTANT SAFETY INFORMATION
- PAGES 4-5        INSTALLATION
- PAGES 5-6        PROGRAMMING
- PAGE 6            OPERATING
- PAGE 6-7         MAINTENANCE
- PAGES 7-8        TROUBLESHOOTING
- PAGES 8-11      PARTS LIST
- PAGE 12          WIRE DIAGRAMS

# **PRODUCT INFORMATION**

**Please take a moment to fill out the information below in order to aid us with any future sales or service inquiries. Model number and serial number information can be found on the serial tag located inside the control box and/or on the lower exterior of the can. Key number can be found on the tag that comes attached to the keys. There may be more than one key number depending on unit.**

**Please keep this information with your records.**

**MODEL#:** \_\_\_\_\_

**SERIAL#:** \_\_\_\_\_

**KEY NUMBER(S):** \_\_\_\_\_

**DATE PURCHASED:** \_\_\_\_\_

**DISTRIBUTOR:** \_\_\_\_\_

**J.E. Adams Industries  
1025 63<sup>rd</sup> Ave. S.W.  
Cedar Rapids, IA 52404  
1-800-553-8861  
[www.jeadams.com](http://www.jeadams.com)**

## **SPECIFICATIONS:**

### Unit specifications:

Voltage: 110v, 60Hz

Amperage: (1)20 amp service is required for this unit

Weight: 195 lbs with pallet attached

### Vac specifications:

Motors: (2) Ametek 110v motors

Fuses: (2) 10 amp fuses, .75 amp and .50 amp

Relays: (2) DPDT 30 amp rating per contact

### Shampoo specifications:

Compressor: (1) Thomas 110v, 1/12<sup>th</sup> hp compressor

Peristaltic pump: (2) Anko peristaltic pumps, 120vac

Relays: (2) Ice cube, DPDT

NOTE: "UNIT INTENDED FOR COMMERCIAL USE ONLY"

## **IMPORTANT SAFETY INSTRUCTIONS**

When using an electrical appliance, basic precautions should always be followed, including the following:

### **READ ALL INSTRUCTIONS BEFORE USING (THIS APPLIANCE)**

### **WARNING – To reduce the risk of fire, electric shock, or injury:**

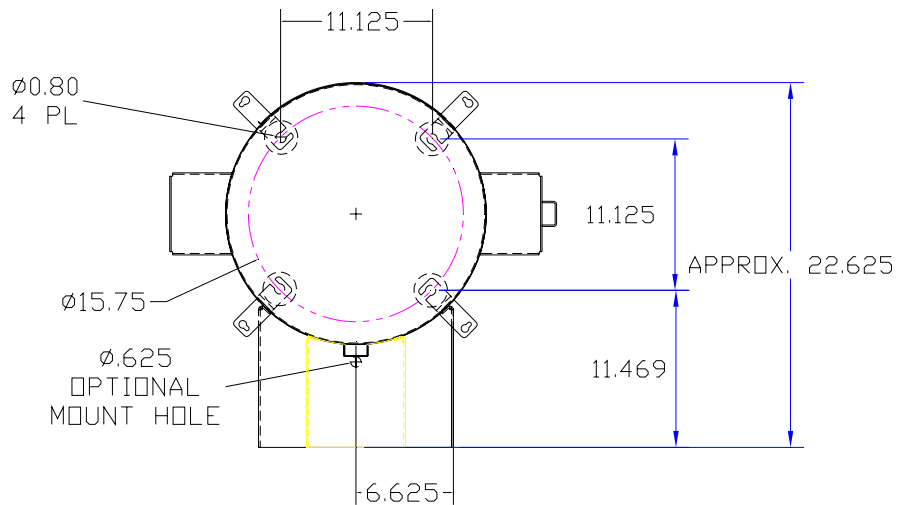
- Do not use on wet surfaces.
- Use only as described in manual. Use only manufactures recommended attachments.
- Do not allow to be used as a toy. Close attention is necessary when used by or near children.
- Do not put any object into openings. Do not use with any opening blocked; keep free of dust, lint, hair and anything that may reduce air flow.
- Keep hair, loose clothing, fingers, and all parts of body away from openings and moving parts.
- Do not use to pick up flammable or combustible liquids, such as gasoline, or use in areas where they may be present.
- "Do not pick up anything that is burning or smoking, such as cigarettes, matches, or hot ashes."
- "DO not use without dust bag and/or filters in place."

### **SAVE THESE INSTRUCTIONS**

# Installation Instructions:

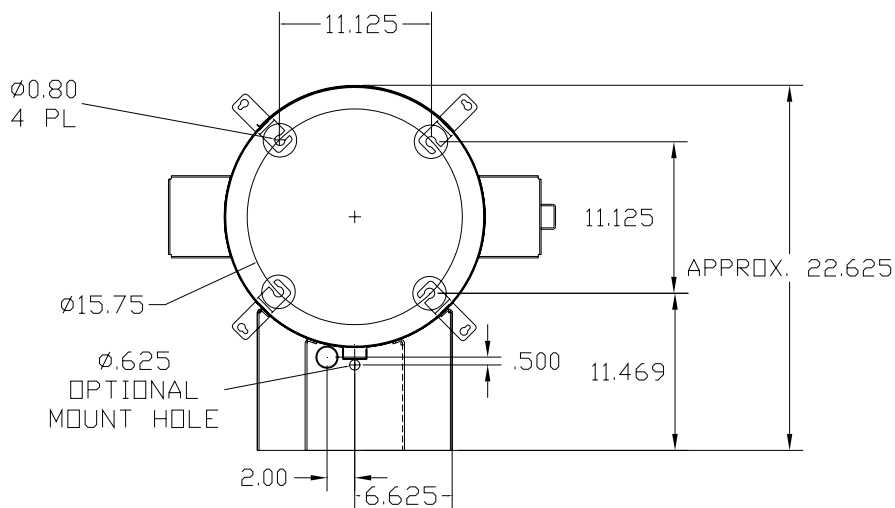
- Determine location to mount unit ("**DANGER**" "**THIS EQUIPMENT INCORPORATES PARTS SUCH AS SWITCHES, MOTORS, OR THE LIKE THAT TEND TO PRODUCE ARCS OR SPARKS THAT CAN CAUSE AN EXPLOSION. WHEN LOCATED IN GASOLINE-DISPENSING AND SERVICE STATIONS INSTALL AND USE AT LEAST 20 FEET (6 M) HORIZONTALLY FROM THE EXTERIOR ENCLOSURE OF ANY DISPENSING PUMP AND AT LEAST 18 INCHES (450 MM) ABOVE A DRIVEWAY OR GROUND LEVEL.**")
- Run 20amp wire service to location underneath canister. Run wire to top of units as shown in fig. 3
- **Grounding Instructions:** This appliance must be connected to a grounded metal, permanent wiring system; or an equipment-grounding conductor must be run with the circuit conductors and connected to the equipment-grounding terminal or lead on the appliance.
- Mount unit to location and use fig. 1 for mount pattern
- If unit is vault ready see fig. 2 for vault tube location.

FIG. 1

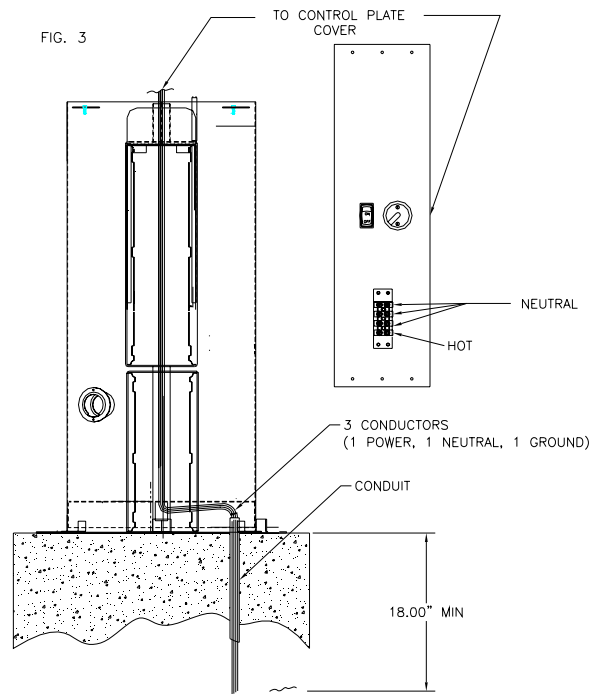


FRONT OF UNIT

FIG. 2



FRONT OF UNIT



- Once unit has been installed use 5871B8 cap plugs supplied with unit to seal holes in canister bottom located in lower cleanout door. Then connect to power, insert shampoo and spot formula into bottom door and attach lids to appropriate bottles.
- Turn unit on and move to program instructions.

## Programming Instructions:

### Coin acceptor:

- No programming to acceptor needed if unit was purchased with the standard Imomex Z32 electronic acceptor (8149-92 our part number) is pre-programmed to accept US quarters, .984 tokens, US \$1 coin and 1.073 token. Acceptor is pre-programmed before it is sent to J.E. Adams.
- If different acceptor was purchased, see additional literature sent along with unit for programming info.

### Bill acceptor:

- Bill acceptor comes pre programmed from J.E. Adams and should not require any changes. If additional programming is needed to acceptors please refer to additional literature sent along with this unit.

### Display:

- Unit may be programmed when received depending on information given at that the time of order.
- To program follow the instructions below.

### Display programming with remote:

- 1) TO PROGRAM, POWER MUST BE TURNED ON.
- 2) INSERT PLUG INTO BACK OF DISPLAY AND PRESS THE EDIT KEY ON REMOTE PAD.
- 3) THE TIMER WILL DISPLAY "TOTAL COINS". THIS IS THE AMOUNT OF COINS THAT HAVE BEEN PUT THROUGH MACHINE SINCE THE LAST TIME IT WAS ZEROED OUT. TO ZERO, PRESS DELETE KEY. TO SAVE, PRESS THE SAVE KEY. THE UNIT WILL NOW

- DISPLAY "SAVED". THIS FUNCTION ALLOWS YOU TO MONITOR THE AMOUNT OF COINS THE MACHINE TAKES.
- 4) NEXT, THE TIMER WILL DISPLAY "COINS TO START". USE THE UP AND DOWN ARROW KEYS TO CHANGE THE AMOUNT OF COINS TO START. PRESS THE SAVE KEY TO SAVE YOUR INPUT. THE DISPLAY WILL CONFIRM THIS BY DISPLAYING THE WORD "SAVED".
  - 5) TIMER WILL NOW DISPLAY "COINS TO START B". FOLLOW THE SAME PROCEDURE AS STEP D.
  - 6) THE TIMER NOW DISPLAYS "CYCLE TIME". TO CHANGE THIS TIME IN 10 SECOND INTERVALS, PRESS THE LEFT ARROW KEY. THEN PRESS THE UP AND DOWN ARROW KEYS TO CHANGE TIME. TO CHANGE TIME BY ONE SECOND INTERVALS, PRESS THE RIGHT ARROW KEY. THEN PRESS THE UP AND DOWN ARROW KEYS TO CHANGE TIME. TO SAVE THE "CYCLE TIME", PRESS THE SAVE KEY. THE TIMER WILL NOW READ "SAVED".
  - 7) TIMER NOW DISPLAYS "CYCLE TIME B". FOLLOW SAME PROCEDURE AS STEP 6.
  - 8) TIMER NOW READS "LAST COIN BEEP". CHANGE REPLY FROM 10 SEC TO 1 MIN OR VICE VERSA BY PRESSING THE "N" KEY. TO SAVE THE DESIRED "LAST COIN BEEP", PRESS THE SAVE KEY.
  - 9) THE "WELCOME MESSAGE" WILL NOW APPEAR WITH THE CHARACTER LOCATED IN THE CENTER OF THE BOARD. IF THE CHARACTER IS BLANK, USE THE UP AND DOWN KEYS. YOU HAVE 36 PLACES TO PUT CHARACTERS. TO MOVE THE MESSAGE LEFT ONE SPACE, PRESS LEFT ARROW KEY. TO INSERT A CHARACTER, PRESS THE INSERT KEY. TO DELETE A CHARACTER, PRESS THE DELETE KEY. TO SAVE MESSAGE, PRESS THE SAVE KEY.
  - 10) NOW THE "SALES" MESSAGE WILL APPEAR. IT ALSO HAS 36 CHARACTERS. FOLLOW THE SAME PROCEDURE AS IN STEP 9. THE SALES MESSAGE WILL CONNECT TO THE END OF THE WELCOME MESSAGE.
  - 11) NOW THE "EXIT MESSAGE" WILL APPEAR. IT ALSO HAS 36 CHARACTERS. FOLLOW THE SAME PROCEDURE AS STEP 9. NOTE THE WELCOME MESSAGE AND SALES MESSAGE SCROLL ON THE DISPLAY AT ALL TIMES. THE EXIT MESSAGE SCROLLS THREE TIMES AFTER THE TIMER HAS TIMED OUT.
  - 12) DISCONNECT REMOTE FROM DISPLAY. DISPLAY IS NOW PROGRAMED AND READY FOR USE.

## Operating Instructions:

- Select desired function.
- Insert coins or bills to start desired function.
- If shampoo/spot is selected, it is recommended that you vacuum before applying formula.
- If other function is selected other than original selected item unit will recalculate timer based on the amount of money it takes to start the specific function.
- Once service is used, hang up hose.

## Maintenance:

- Filter bags should be taken out weekly and shaken out. Also it might be a good idea to keep a new set of bags on hand so that once a month or longer you can take original bags out and wash them.
- Check vac hose for cracks on a weekly basis.
- Check shampoo and spot formula bottles to assure that they are full.
- Clean canister with a stainless steel cleaner as needed.

- Check motor brushes approx. every 3 months for excessive wear. Motor brushes should be changed if they are shorter than ¼". ***Please disconnect power before doing this.***
- Check all shampoo lines and assembly for any signs of wear.
- All servicing of machine should be conducted by an authorized service representative.

## Troubleshooting: ***DISCONNECT POWER BEFORE SERVICING***

<b>Problem</b>	<b>Possible cause</b>	<b>Solution</b>
Unit is not powered	Power switch under dome of unit is not in the on position	Flip switch to on
Display is not powering	Power switch under dome of unit is not in the on position  Check transformer inside main power box in unit. Is there 24VAC at output terminal?	Flip switch to on  Replace transformer (8131-2)
Display reads "fail"	Coin acceptor putting out continuous pulse  Program in display may be lost	Press mode button on display. If fail does not go away replace coin acceptor. (8149-92) Reprogram display. If fail goes away and then comes back, replace battery in display.
Unit keeps blowing my breaker from my incoming power source	Inadequate wire size supplied to machine  Wrong size breaker	Call electrician and install proper wire size for 20amp service versus length or run.  Install correct breaker( only use wire size that is adequate to handle 20 amp breaker)
Fuses for vac motors keep blowing.	Inadequate wire size supplied to machine  Motor brushes may be bad or too short	Call electrician and install proper wire size for 20amp service versus length or run.  Replace motor brushes (8055BR)

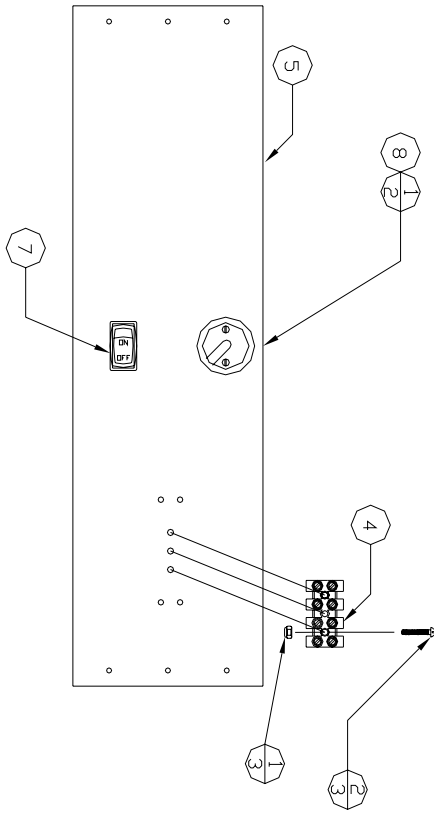
Vac motors will not shut off after display has timed out	Check contactor for vac and located in relay control box	If contact is stuck open replace with new contactor. (5967D001)
Shampoo/spot keeps running after display has timed out	Check surface mount relay labeled shampoo or spot for contact stuck.	If contact is stuck open replace with new relay(8768)
Unit has lost suction	Vac hose clogged	Clean out debris from vac hose
	Filter bags need cleaned	Clean out filter bags or replace (8076)
	Vac hose is damaged	Replace vac hose (2036)
	Cleanout door gaskets torn or worn	Replace gaskets (8159)
Unit has shut down For no apparent reason	This unit has a reset thermal limiter in the compressor. Unit may have shut down due to excessive heat	Turn off power to the machine and wait for a period of 5 minutes. Reapply power and activate machine.

## **PARTS LIST:**

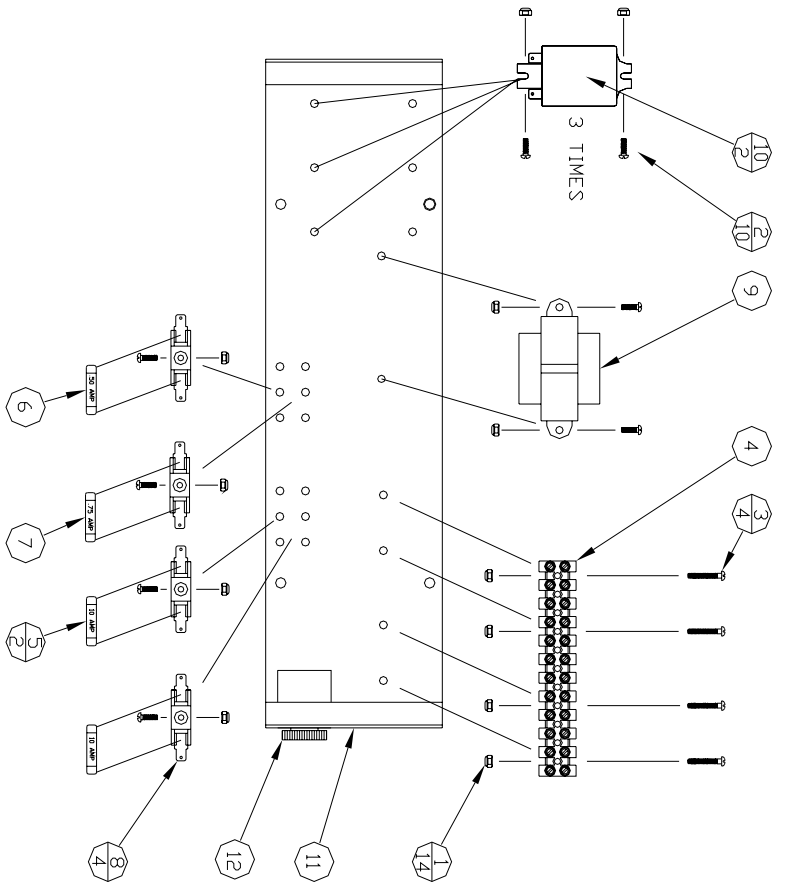
### PARTS NOT SHOWN:

2091	SWIVEL CUFF
2056-BLACK	2" x 15' BLACK VAC HOSE
5910D1	8" FLORESCENT LIGHT
8051G	MOTOR BRACKET
8055	VAC MOTOR
8076	FILTER BAGS
8159	DOOR GASKET
8057	MOTOR GASKET
9500WIN	SHAMPOO FORMULA
11000SPOT	SPOT REMOVER FORMULA

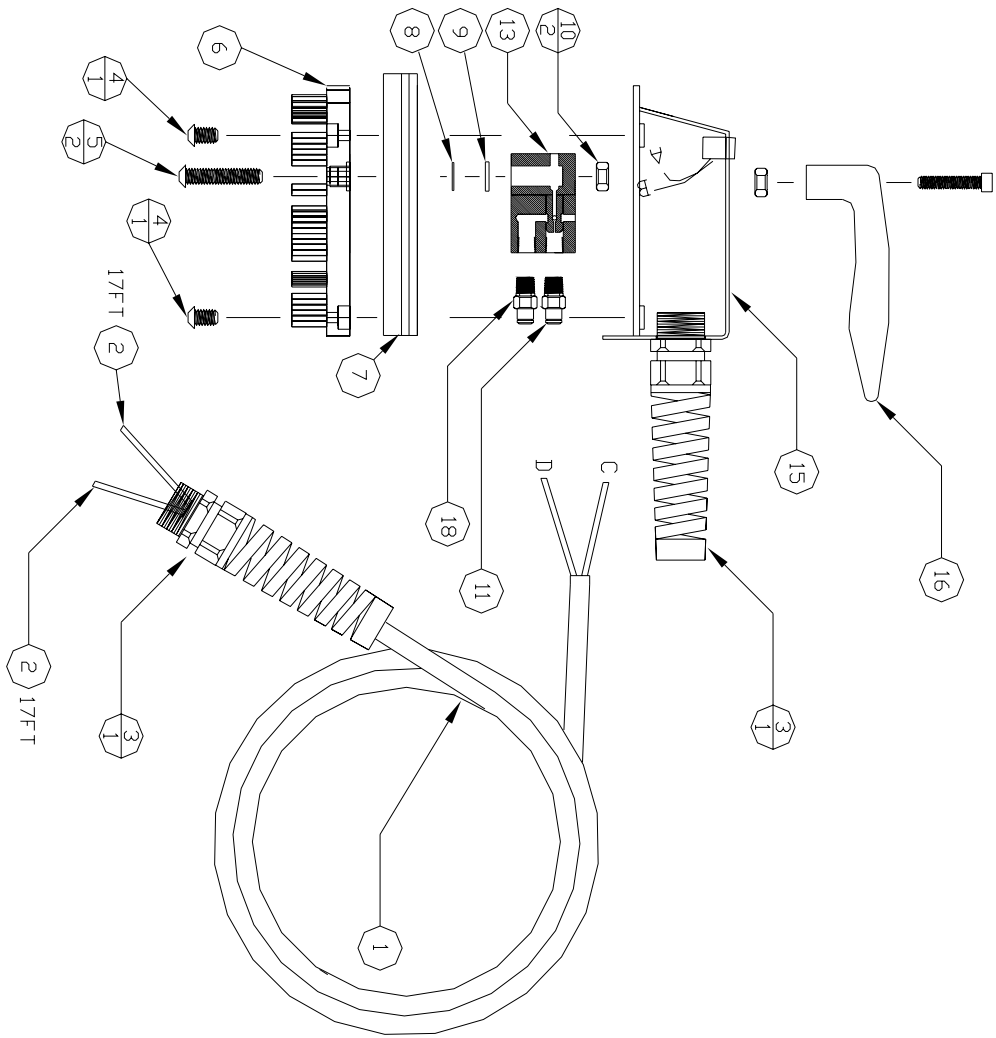




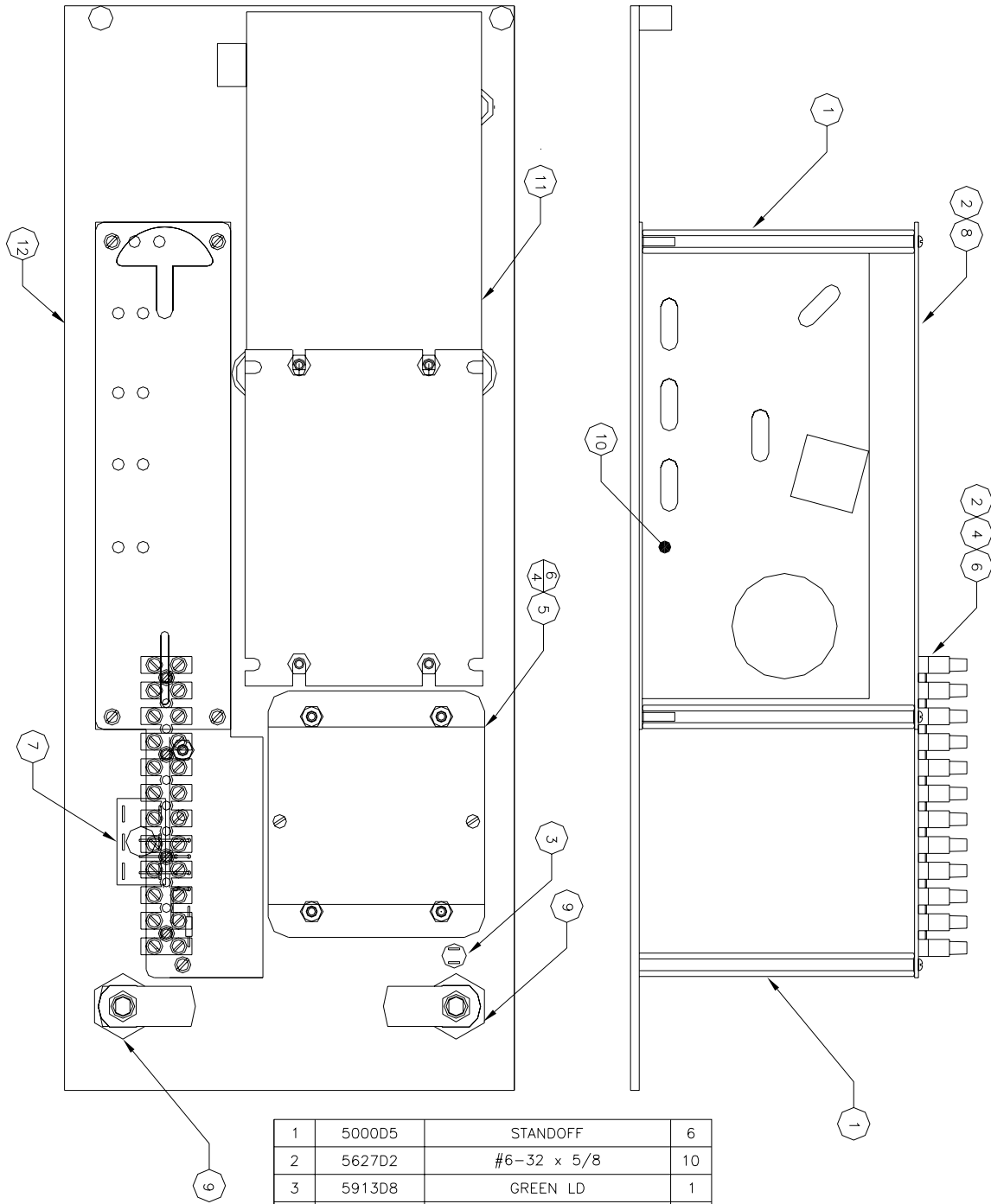
1	5603D18	6-32 NYLDC NUT	3
2	5627D1	#6-32 x 1" SLOT SCREW	3
4	5944D004	TERM. STRIP, 4 POS C-15 SER.	1
5	9500-12	ELECTRICAL BDX COVER	1
7	5914	SPST ROCKER SWITCH, 20A	1
8	5917D3	LAMP SOCKET -PDRC.	1



1	5603D18	#6-32 NYLDC NUT	16
2	5662D5	#6-32 x 3/8 PHIL PAN HEAD	12
3	5627D1	#6-32 x 5/8 SLT RND HEAD	4
4	5944D001	TERMINAL STRIP 12 POS.	1
5	5979D2	FUSE, 10AMP, ABC, 1/4 x 1 1/4	2
6	5979D7	FUSE, .5AMP, ABC, 1/4 x 1 1/4	1
7	5979D8	FUSE, .75AMP, ABC, 1/4x1 1/4	1
8	5982D3	FUSE BLDCK 3AG	4
9	8131-2	TRANSFORMER, 110/220/24	1
10	8760	RELAY 24VAC	3
11	9500-11	ELECTRICAL BDX	1
12	8131-3	AUDIO ALERT	1
13	5937D23	CONNECTOR, F 6-P	1

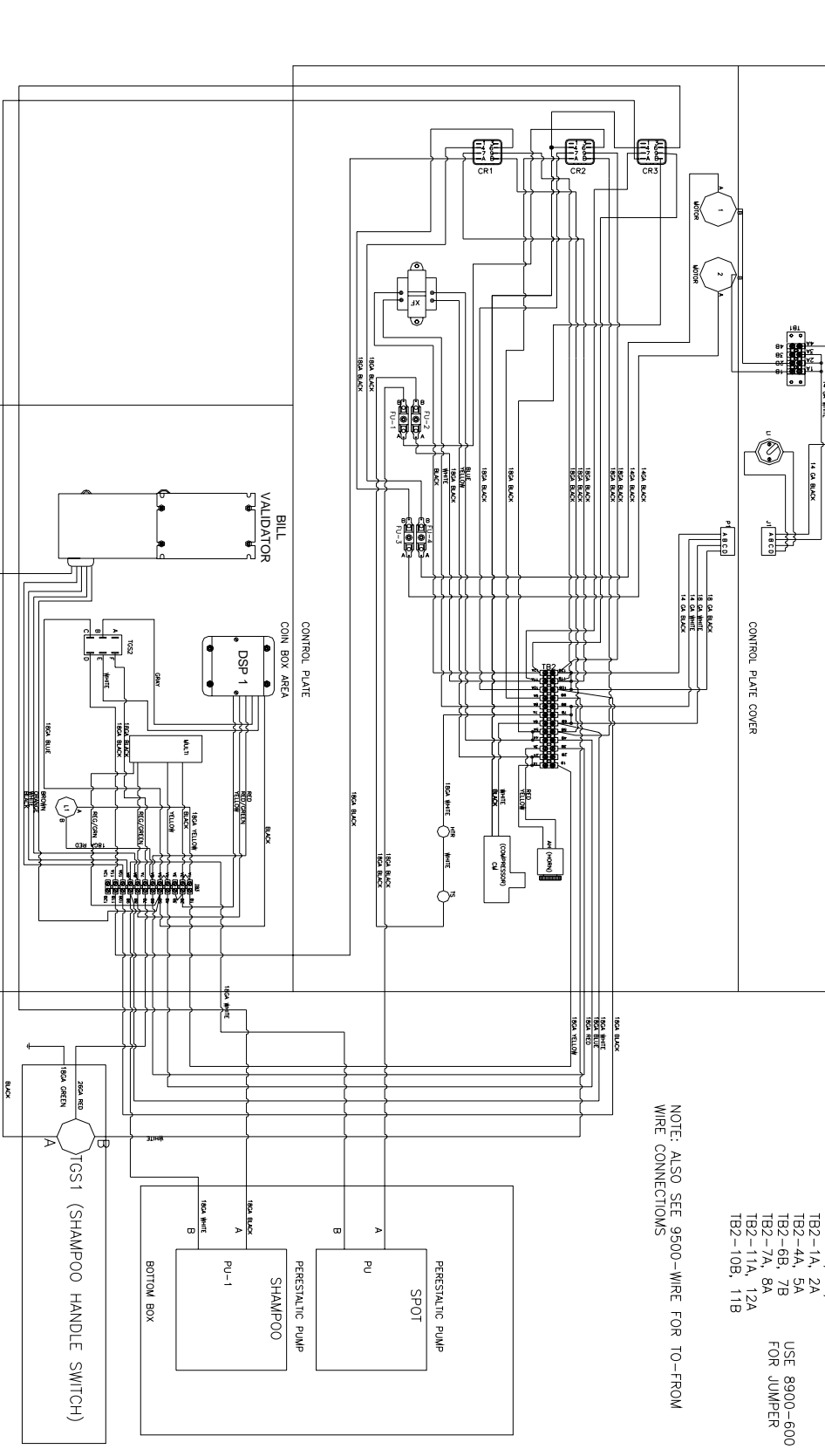


1	3010	3/8 PRESSURE WASH HOSE	15FT
2	3105	3/16OD NYLON TUBING	17FT
3	8549	FLEX STRAIN RELIEF	2
4	5720D1	#10-24 x .75 PHIL PAN SS	2
5	5720D2	#10-24 x 2" PHIL PAN SS	2
6	9500-17	PLASTIC BRUSH W/HOLES	1
7	9500-16	BLACK BUMPER	1
8	9500-32	STAINLESS SCREEN	1
9	7109D53	ORING #111 VITON 75D	1
10	5605D1	#10-24 HEX NUT-ZINC	2
11	5803D11	1/4MNPT x 3/16OD PUSHLOCK	1
13	9500-65	SPRAY HEAD BLOCK	1
14	11000-55	ROCKER SWITCH	1
15	9500-29W	BRUSH CASE WELDMENT	1
16	9500-15	BLACK HANDLE W./SCREWS	1
18	5803d2	1/4MNPT x1/8OD PUSHLOCK	1
19	3101	1/8 NYLON TUBING	17FT



1	5000D5	STANDOFF	6
2	5627D2	#6-32 x 5/8	10
3	5913D8	GREEN LD	1
4	5944D003	TERMINAL STRIP	1
5	8131-8	DISPLAY LTT-802	1
6	5603D18	#6-32 NYLOC NUT	12
7	8849D002	DPDT SWITCH	1
8	8900-82	TERMINAL BRACKET	1
9	8953	LOCK W/KEYS	2
10	8149-92	IMONEX ELECTRONIC ACCEPTOR	1
11	8130-6	MARS VALIDATOR	1
12	9500-21W	FACEPLATE, SHAMPOO	1

REV. NO. S9500-B



NOTE: ALSO SEE 9500-WIRE FOR TO-FROM WIRE CONNECTIONS

JUMPERS:  
 TB1-1A, 2A, 3A  
 TB2-1A, 2A  
 TB2-4A, 5A  
 TB2-6B, 7B  
 TB2-7A, 8A  
 TB2-11A, 12A  
 TB2-10B, 11B

USE 8900-600 FOR JUMPER

REV. NO.	DESCRIPTION	DATE	BY

THIS DOCUMENT SHALL NOT BE REPRODUCED NOR SHALL THE INFORMATION THEREIN BE USED BY OR DISCLOSED TO OTHERS EXCEPT AS AUTHORIZED BY J.E. ADAMS INDUSTRIES

CD 1-000 S9500

CEADAMS

CCOMR 949/95. 10/84

UNSPECIFIED TOLERANCES  
 1. PL: ±0.10  
 2. PL: ±0.10  
 3. PL: ±0.03  
 ANGLE: 1:10°

TITLE: SHAMPOO / VAC

FORM: CK DATE: 6-04

REV. NO.: S9500-B

REV. LEVEL: -